

Using the Comparative Extraction Window

Tape 2—0:00:10

If you have a patient for whom you are deciding between three different remedies, there are a number of ways to make your choice. You could drag each remedy over to the Keynote smart icon and read the Mental/Emotional symptoms for each. But, you may still find yourself in a dilemma if you have remedies which are very close. For example, you may be deciding between Hyoscyamus, Belladonna and Lyssin for a very fearful patient. What you need to do to make a good remedy choice is to find out which fears they share and which fears are unique to each remedy. You can find out this information using the Comparative Extraction window.



The Comparative Extraction window allows you to limit which chapters of the repertory are included in the comparison. It also presents you with various Search Modes.

Search Mode	Explanation
Symptoms for each remedy individually.	It will bring up a separate window for each remedy included in the Comparative Extraction window. It is difficult to do a close comparison using this mode.
All symptoms with at least one remedy.	Any rubric that has one or more of those remedies in it. You might want to do this for comparing remedies for a particular symptom. This a good mode to use as a study tool to compare remedies.
Common and Exclusive Remedy Symptoms	Common is what symptoms they share. Exclusive is what symptoms are unique to that remedy as compared to the others in the Comparative Extraction window.
Common and Conditionally Exclusive Remedy Symptoms	This feature first displays the symptoms that remedies have in common, based on conditions you have specified. By clicking on the arrow button, RADAR displays the symptoms that the first remedy has but the second remedy only contains without the conditions that you have applied. This is not a feature you are likely to use often.

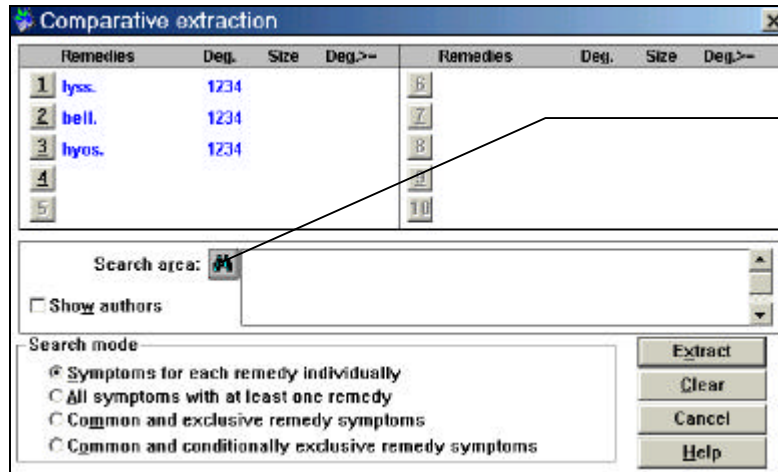
To transfer remedies from the Analysis Window to the Comparative Extraction Window:

1. Click one of the remedies you wish to compare in the Analysis window.
2. Drag it over to the Comparative Extraction icon on the Smart Icon bar.
3. Repeat for each of the other remedies you wish to compare. You can compare up to 10 remedies.



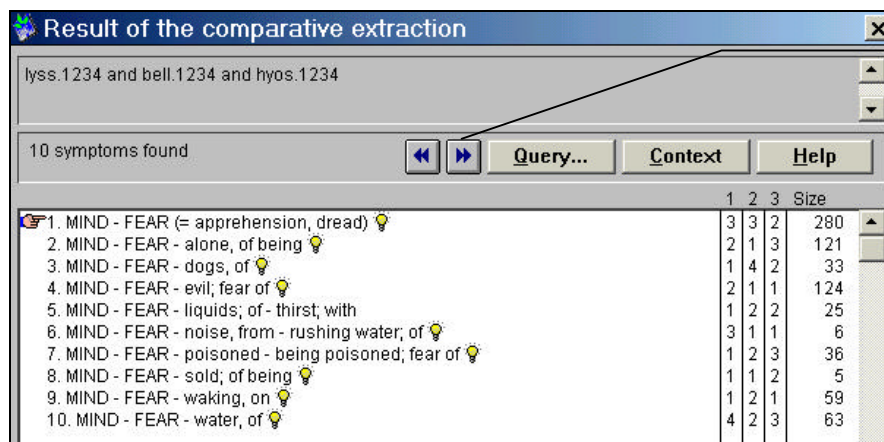
NOTES

4. Close the Analysis Window. (You must do this to display the Comparative Extraction window.)
5. Click the Comparative Extraction button.
-or-
Press F5. The Comparative Extraction window appears.



Limit the chapters to include in the comparison by clicking the binoculars.

6. Limit the Search area by clicking the binoculars and choosing a chapter and section.
7. Set the Search mode by clicking the desired mode, or pressing Alt + the underlined letter.
8. Press Enter or click Extract to activate the Comparative Extraction. The Result of the Comparative Extraction window appears. (The following is a comparative extraction with Search mode of *Common and exclusive remedy symptoms*.)



Click arrow buttons for more results.

9. Click arrow buttons for more results.

- Drag **Lyssin**, **Belladonna** and **Hyoscyamus** over to the Comparative Extraction button on the Smart Icon bar.
- Press **Esc** to close the Analysis window.
- Press **F5**.
- Click the Binoculars to limit the chapters to include only the **Fear, Mind** section.
- Set the Search Mode to **Common and exclusive remedy symptoms**.

- Press **Enter**.
- Click the **Double arrow** to the right to display the exclusive symptoms for the first remedy on the list.
- Click the **Double arrow** again to display the symptoms for the next remedy.
- Click the **Double arrow** once more to display the symptoms for the third remedy.

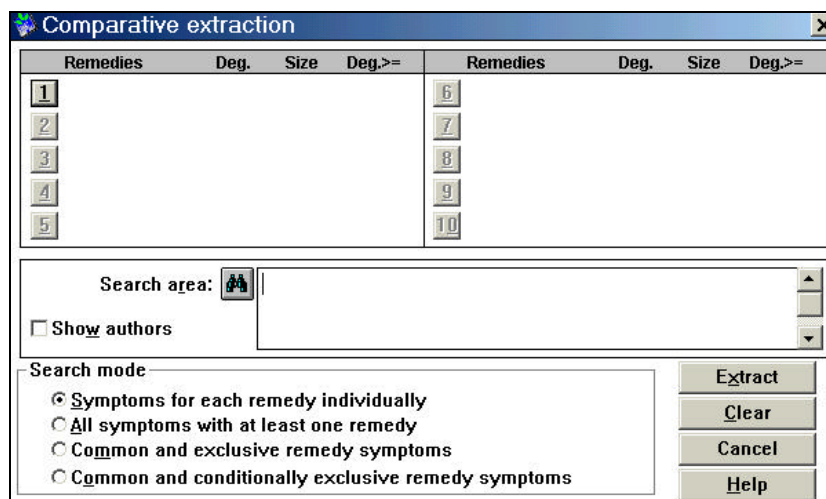
Entering Remedies into the Comparative Extraction Window

Tape 2—18:30

One way to get remedies into the Comparative Extraction window is to drag them from the Analysis window or the Repertory window to the Comparative Extraction button on the Smart Icon bar. You can also bring them into the Comparative Extraction window after the window is opened.

To enter remedies into the Comparative Extraction window:

1. Click the Comparative Extraction icon
-or-
Press F5. The Comparative Extraction window appears.



2. In the Remedies box, click on the button with 1.
-or-
Press Alt + 1. The Remedy Selection window appears.
3. Begin typing the abbreviation of the remedy you wish to place into the Remedies box.
4. When the remedy name is highlighted, press Enter. It appears in the Remedies box.

Extracting Keynotes for a Remedy

Tape 2—20:57

You can display the keynotes for a remedy by excluding rubrics from the Comparative Extraction. What levels you exclude depend on how well-represented the remedy is in the repertory. If a remedy only shows up in 30 or 40 rubrics, you may not want to exclude any rubrics. But if it shows up in 3400 rubrics, you will need to limit the size of

NOTES

the rubrics and the degree of the remedy within a rubric to get a list of keynotes for that remedy.

You can exclude rubrics by setting parameters in the Remedy Selection window. The following table explains the possible parameters available for extracting rubrics.

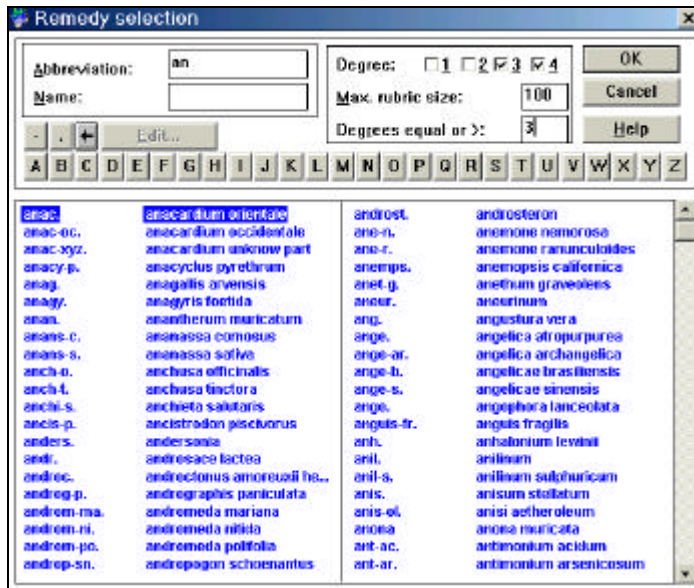
NOTE	The way to use this tool is to try different numbers and see what you get. If a rubric does not appear which you know is a keynote of a particular remedy, change the parameters for the rubrics allowed.
-------------	---

REMEDY SELECTION WINDOW PARAMETERS TABLE

Parameter	Explanation
<i>Degree</i>	The degree assigned to the remedy in the repertory for each rubric in which it appears. For a remedy that is well represented in the repertory, you may wish to limit this number to degrees 3 and 4 when extracting keynotes. For a remedy that appears in fewer rubrics, you may not want to modify this setting.
<i>Maximum Rubric Size</i>	This indicates how many remedies appear in the rubrics that will be included. Again, for a well represented remedy, you may want to limit this number.
<i>Degrees equal or ></i>	This number indicates many remedies can have any one of the degrees you have chosen for the extraction. For example, if you set this value to 3, only two other remedies in the rubric can have degrees greater than or equal to those of the chosen remedy. This excludes rubrics that have a lot of remedies. If you put this number too small, you may lose a very important symptom.

To specify parameters for selection of rubrics for keynotes:

1. Follow the directions through step 3 for entering Remedies into the Comparative Extraction on page 51.
2. Specify the Degree for the remedy in each rubric by clicking into the box next to the appropriate number (Alt + the underlined number).
3. Specify the Maximum Rubric Size by typing a number into the box (Alt+m).
4. Specify the Degrees equal or greater by typing a number into the box (Alt +r).



5. Press Enter.

- Clear the remedies currently in the Remedy box in the Comparative Extraction Window.
- Click the **1** button, or press Alt + 1.
- Type **an**. Anacardium is highlighted.
- Set **degrees** at **3** and **4**
- Set **maximum rubric size** at **100**.
- Set **Degrees equal or >** at **3**.
- Press **Enter**. The remedy Anacardium appears in the Remedy box in the Comparative Extraction window with the parameters set above.
- Press **Enter** again to execute the Comparative Extraction.

Finding Remedies in the Highest Degree

Tape 2—50:02

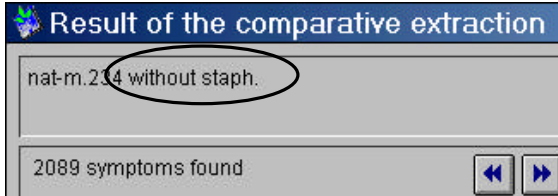
You can also use the Comparative Extraction to identify symptoms that a particular remedy has stronger than any other remedy. To do this, leave the degrees at the default of 1, 2, 3, and 4, the maximum rubric size blank, and Degrees equal or > set to 1. This doesn't represent keynotes, but it does represent those symptoms that are stronger in the remedy of interest than in other remedies. This is probably more useful with smaller remedies.

- Press F5 to display the **Comparative Extraction** screen.
- **Clear** the current setting, if necessary.
- Click the **1** button (**Alt +1**). Choose **Lachesis**.
- Set **Degrees equal or >** at 1.
- Press **Enter**.
- Press **Enter** to execute the Comparative Extraction.

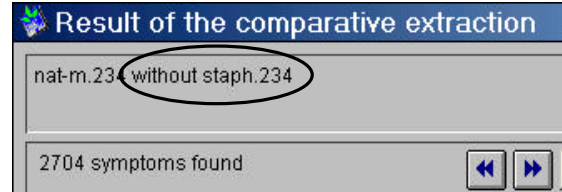
Common and Conditionally Exclusive Remedy Extractions

Tape 2—46:07

This feature is less likely to be useful than the Common and Exclusive Remedy Symptoms option. At first glance, it appears to yield the same result, but by looking at additional results, shows it to be a bit different.



Common and Exclusive Remedy Symptoms



Common and Conditionally Exclusive Remedy Symptoms

- Press **F5** to display the **Comparative Extraction** screen.
- **Clear** the current setting, if necessary.
- Click the **1** button (**Alt + 1**).
- Choose **Natrum Muriaticum (Nat-M)**.
- **Remove** the check from **Degree 1**.
- Press **Enter**
- Click the **2** button (**Alt + 2**).
- Choose **Staphysagria (Staph)**.
- Click **Common and Exclusive Remedy Symptoms (Alt + M)**.
- Press **Enter**.
- Notice that nat-m 234 and staph 234 are displayed.
- Click the **double arrow** to advance to more results.
- Notice that Nat-m 234 without staph is displayed.
- Click the **Query** button (**Alt + Q**) to return to the Comparative Extraction screen.
- Change the search mode to **Common and Conditionally Exclusive Remedy Symptoms (Alt + O)**.
- Press **Enter**.
- Notice that the first screen displays the same result as the previous extraction.
- Click the **double arrow** to advance to more results.
- Notice that nat-m234 without staph 234 is displayed.