

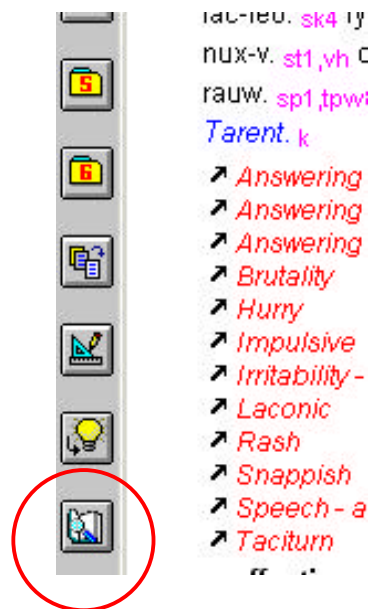
3 RADAR: Search into EH

3.1 Introduction

In this new version of RADAR (8.1.30), the user can start a search in EH from within RADAR. This feature can be used in different ways

3.2 Compose an EH query into RADAR

A new icon has been added in the left toolbar, the user can drag symptoms, remedies and authors to this icon. You can also select cross references and have those included.

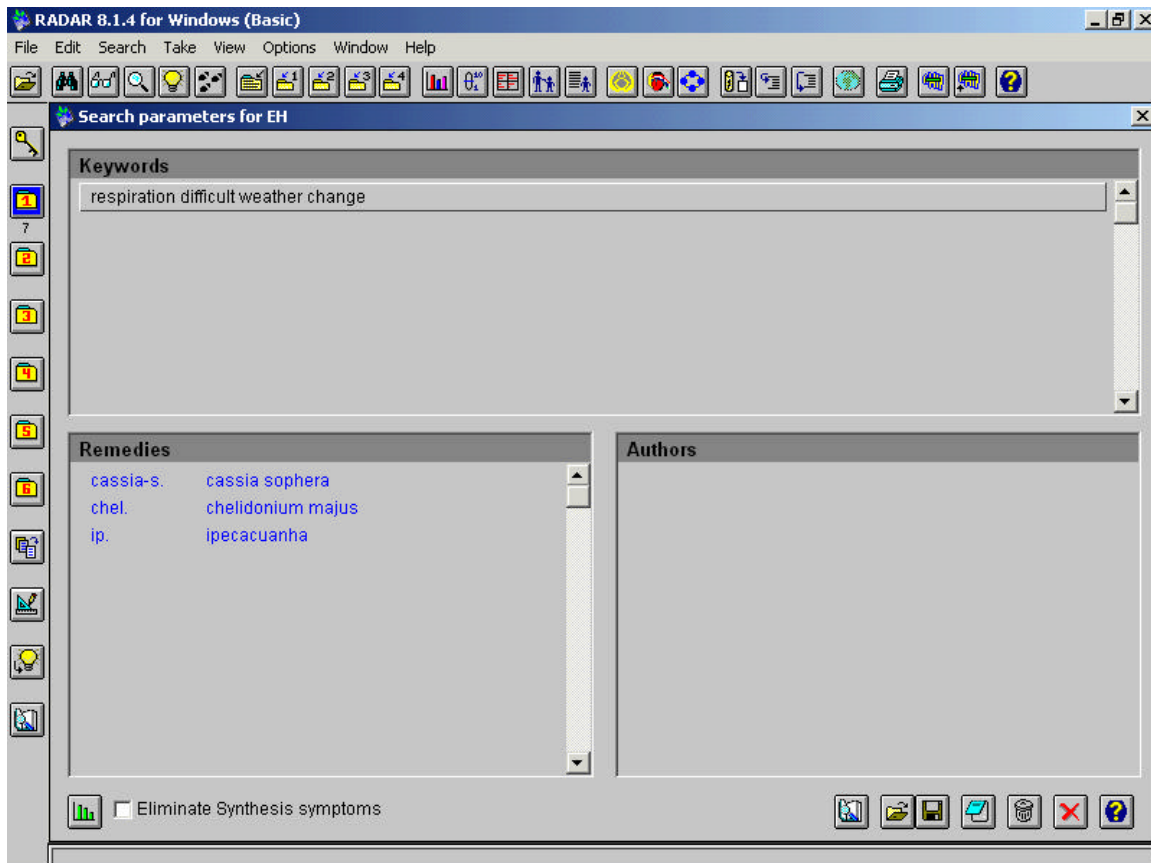


The user can drag symptoms from the repertory window, the clipboard window, the symptom information window, and the search result window.

He can also drag remedies and authors from the repertory window.

A special feature allows dragging symptoms (rubrics) from the repertory with all the remedies of this symptom (rubric), and also a remedy with all the authors of this remedy. This can be done with by holding down the shift key **and** dragging at the same time.

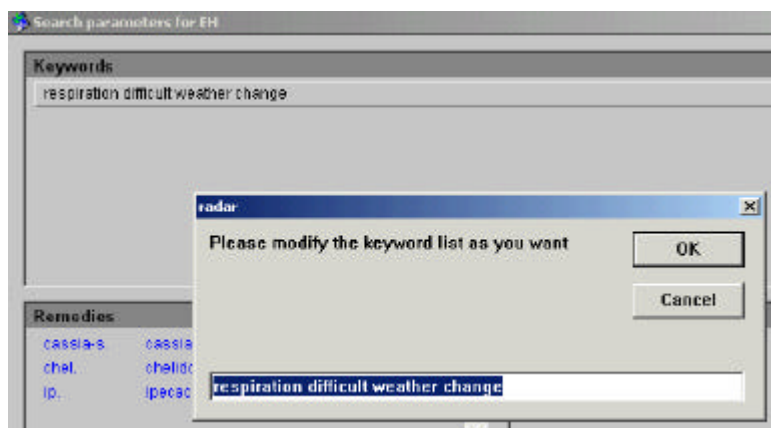
By clicking on this new icon, the search window opens and the user can modify the search parameters for EH.



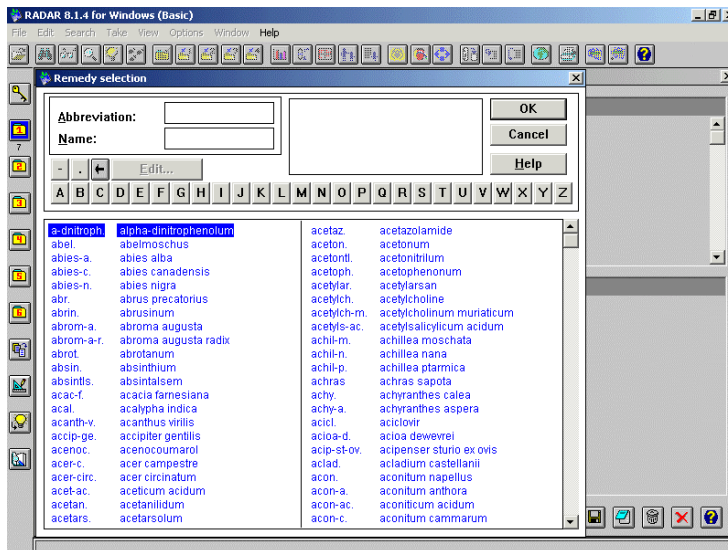
This window is divided in 3 parts, one for the keywords (coming from the dragged symptoms), one for the remedies and one for the authors.

The user can edit each item, by double clicking on it or by pressing enter (the current item that is selected will be the one that is edited).

For the symptom, a small box will appear where the user can change the name.



For the remedies and authors, the choice will be done in the author or remedies selection window.



A new item can also be added by double clicking in an empty part of the window. If the double click is in the keywords rectangle, it will add a keyword, etc...

To delete an item, simply press the Delete key. This will delete the current item. You can also delete the current item by replacing it with an empty name.

Please note that when the symptom is dragged, it is filtered: some common words not useful for the search are removed from the symptom text. These include words like of, the or etc. It also includes certain chapter headings such as Mind and Generals. If you want to customize the list of words that are filtered, click on the icon below:



All the search parameters can be saved and restored from a file by clicking on these icons:



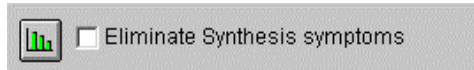
Clicking on the trash icon clears all the current search parameters:



To run the search in EH and switch to EH, the user should click on the EH icon:



If the user wants to directly make an analysis in EH from their search, they can click on the following icon:



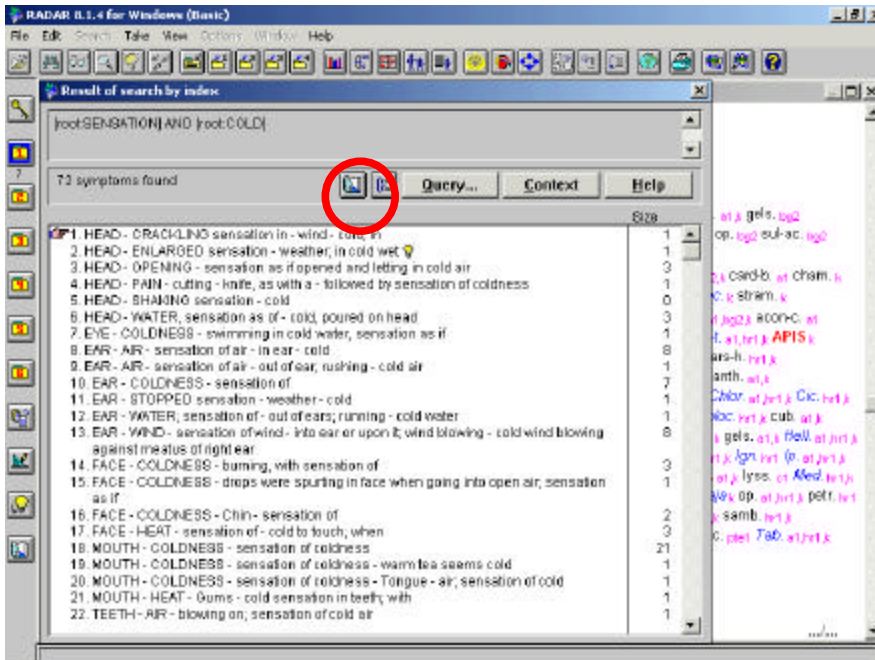
If the above box is checked, then after the analysis, EH will deselect the remedies in the analysis window (F8) from the corresponding Synthesis symptoms (rubrics).

Remark : in order to make the exported search from Radar to Eh as efficient as possible, the following rules are applied :

- 1) if 2 words are selected in the Radar-search, the corresponding query in Eh will be limited to a distance of 6 words
- 2) if 3 words are selected in the Radar-search, the corresponding query in Eh will be limited to a distance of 8 words (indicated with X sign in the Eh query window)
- 3) if more than 3 words are selected in the Radar-search, the corresponding query in Eh will be limited to the same sentence.
- 4) if a remedy has been selected in the Radar-search, the corresponding query in Eh will be limited to the same sentence
- 5) if an author has been selected in the Radar-search, the corresponding query in Eh will be limited to the same paragraph.

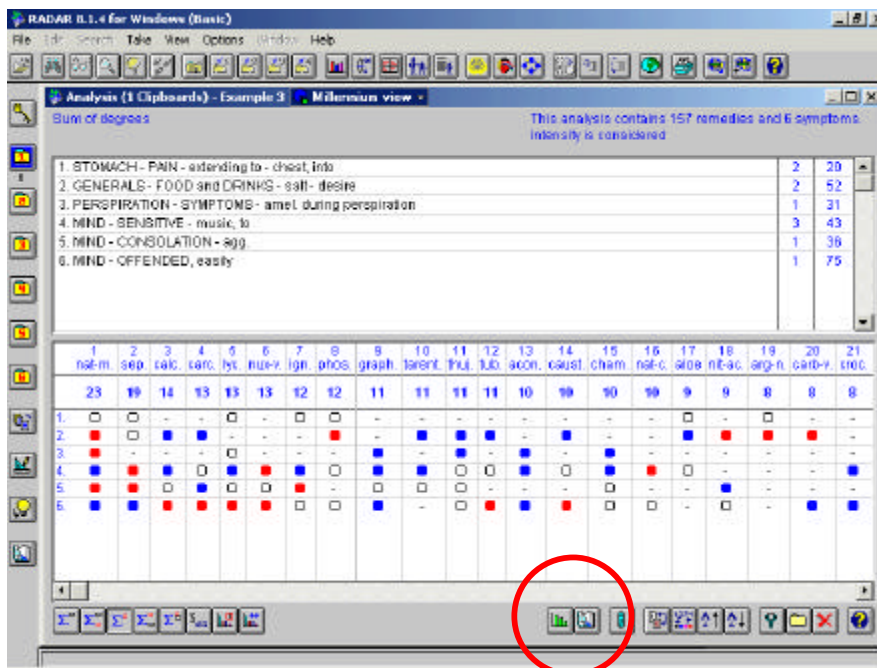
3.3 Make the same search in EH as in RADAR

When the user has made a search in RADAR (with the query window (F4) or the quick command), RADAR shows the search results. This window also contains a new icon. This icon will switch to EH and make the same search as in RADAR. Be careful to not include common words like restless or weakness or the search in EH will take a long time!!!



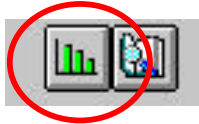
3.4 Make the same analysis in EH as in RADAR

When the user has made an analysis in RADAR, RADAR shows the analysis results. This window contains also 2 new icons.





This icon will switch to EH and make the same search as in RADAR.



This icon will switch to EH and make the same analysis as in RADAR.

If the analysis contains common words such as restless, fear, weakness, sadness etc then the analysis in EH will take a long time. It is generally better to remove such words before conducting the analysis in EH.