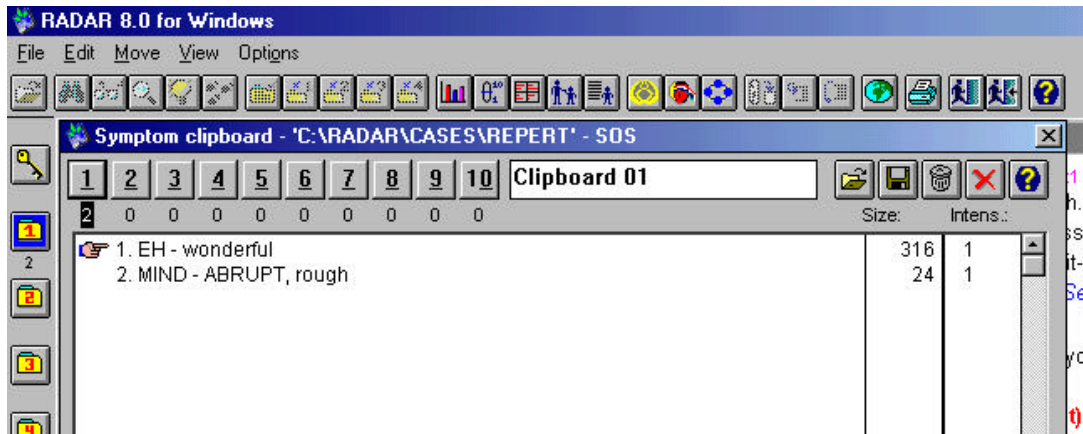


1.6 What happens in RADAR ?

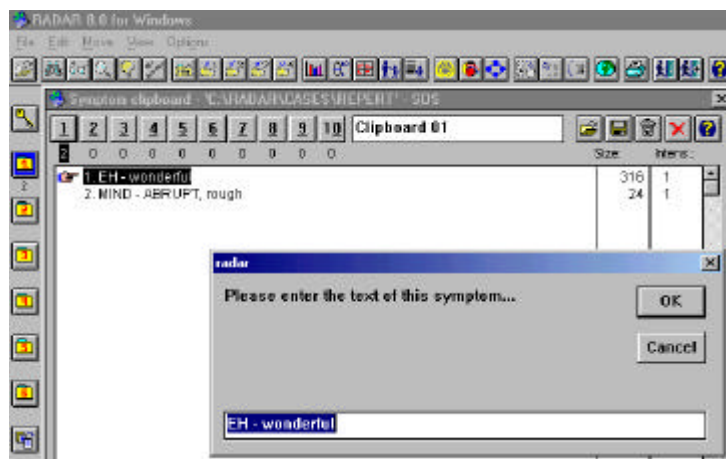
1.6.1 Imported symptoms

The imported symptoms are placed on the RADAR clipboard just like normal Synthesis symptoms. They can be combined in groups with other rubrics from Synthesis or made into eliminative rubrics, etc...



1.6.2 The symptom text

Normally, by double-clicking on a symptom text in the RADAR clipboard, you jump directly to that symptom in the repertory. If you double-click on an EH symptom, a small window will open which allows you to change the text of the EH rubric (symptom).



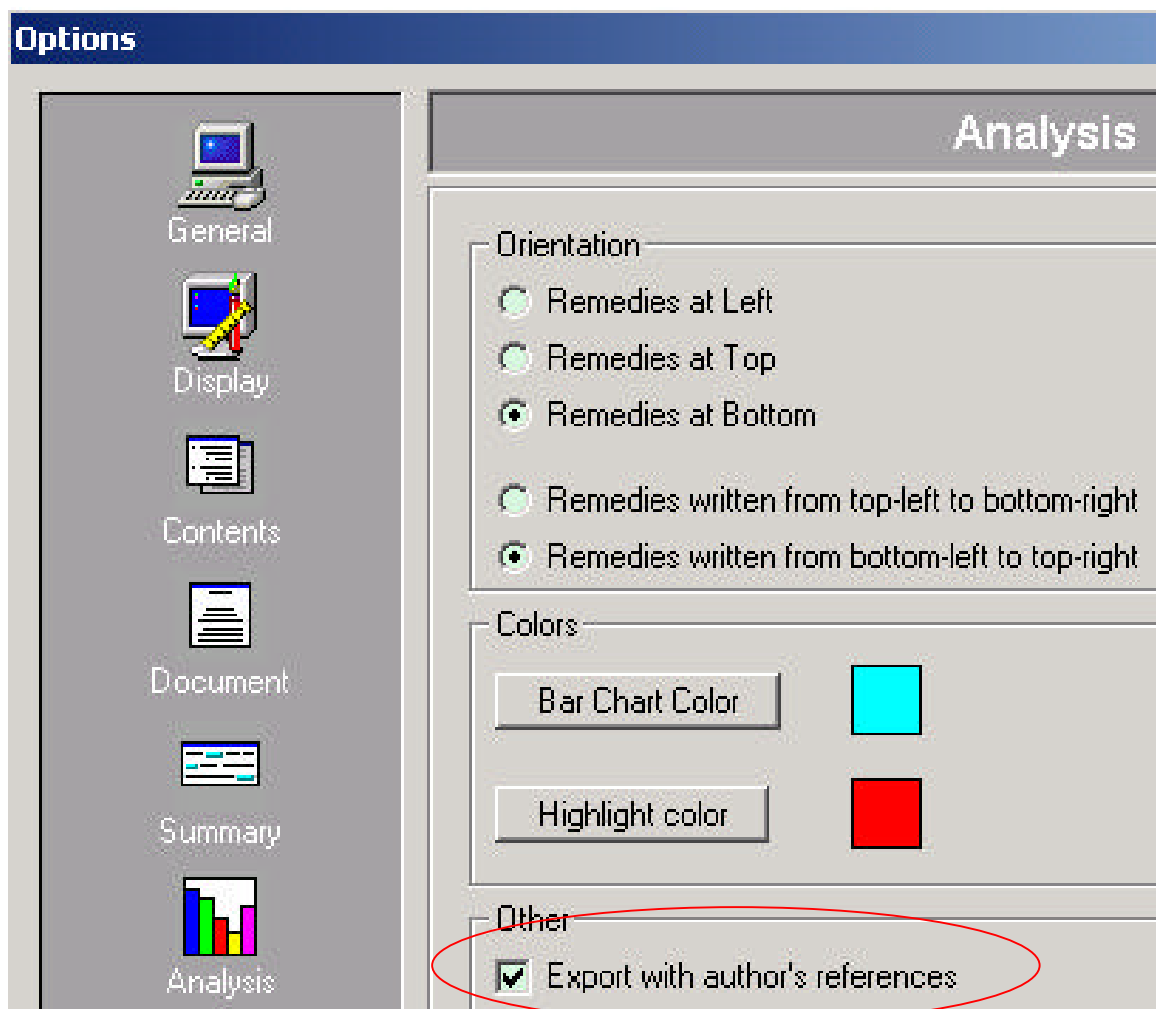
1.6.3 The analysis and the cases

Imported symptoms (rubrics) can be found in the clipboard exactly like normal repertory symptoms (rubrics). They are taken into consideration for the analysis, and, if you save the case, they will also be saved. When you recall the case, the symptoms that were originally coming from EH will also be recalled.

1.6.4 The authors

The only difference between exporting from the analysis and exporting from the clipboard, is that with larger searches it is easier to check the accuracy of results from the analysis window (F8).

From the analysis window (F8), you can choose to only one have one author reference exported, this author is '*EH'. Through the options of Analysis in EH, you can decide to export remedies with or without the other "authors references".



From the clipboard, all the authors are always exported plus one, '*EH':

