

4 EH Mixes

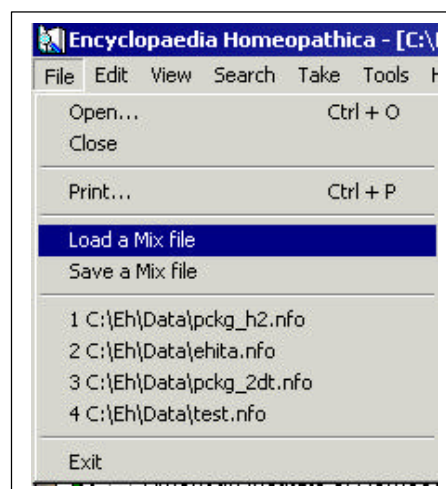
4.1 Definition :

A Mix is a selection of titles in the Table Of Contents which limits the search to specified titles.

4.2 Funtionalities :

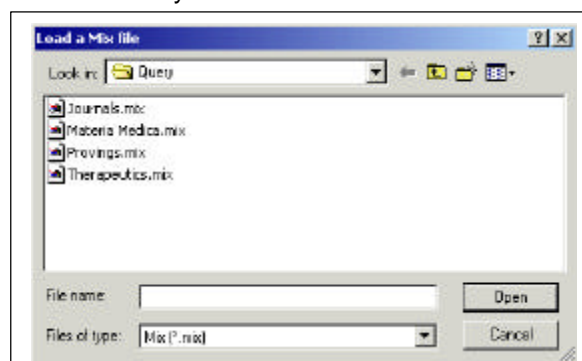
4.2.1 From the main window :

You can **Save and Load Mixes** from the File Menu, the corresponding selections will be saved or loaded from a text file located in the EH\QUERY folder; these files will have the extension .MIX, the name of the mix is free.



By loading a mix, you will overwrite any existing selections in the Table Of Contents, all the documents that were selected before the load and not present in the selected mix will no longer be selected; **only the documents in the mix will be selected.**

There is no limit to the number of mixes you can create.




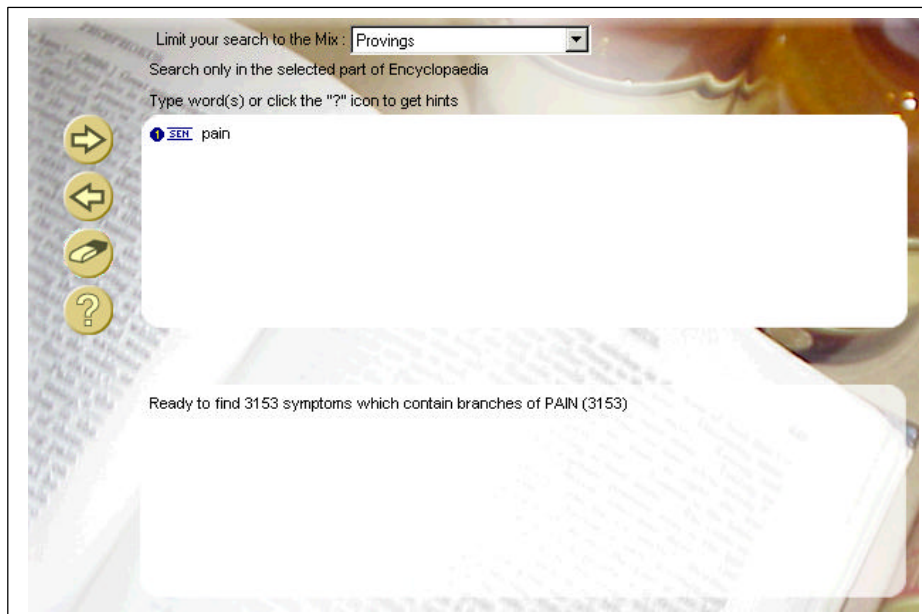
4.2.2 From the search window :

From the Search window, you can load a mix from a list containing all the valid mixes found in the EH/QUERY folder.

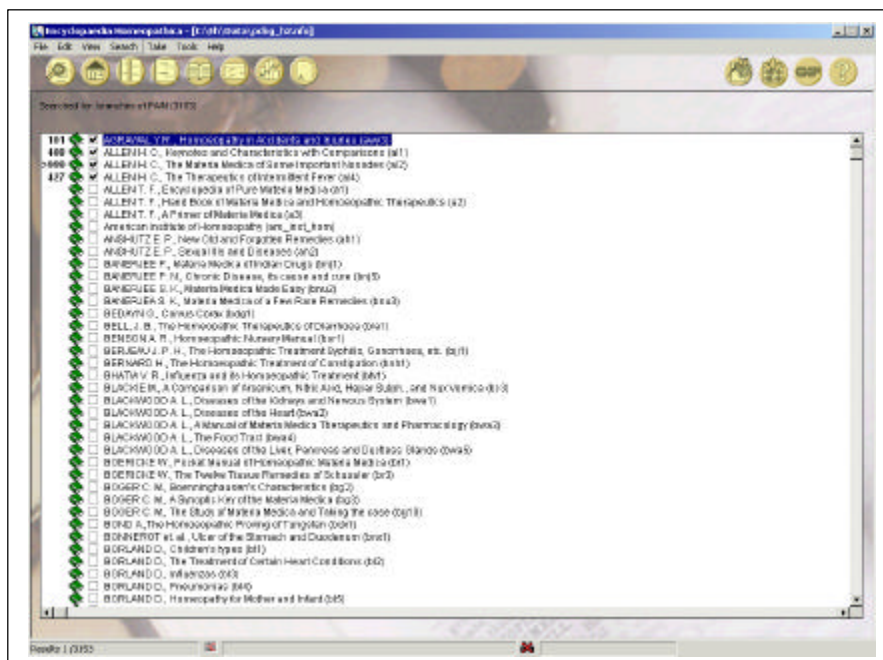


Once a mix is loaded, the estimation of the query is updated and a message is displayed to remind you that the search is limited to a part of the database.

Once the mix you have chosen is loaded, you can start the find as usual by clicking on the icon  to see the results.



Another function is being able to create new mixes directly from the search window. If you choose 'Create a New Mix' from the combo box, the program will automatically switch to the Table of Contents window to let you create your new mix.



Another function is to '**clear**' the current mix. If for any reason, you want to search the whole database, without a mix, you just choose '**None**' from the list of Mixes.



4.2.3 Default Mix :

You can also choose to apply a default mix when starting EH, to do this, click **Tools - Options**, choose **Contents** and choose the default mix to be applied in the list of available Mixes (figure 8)

